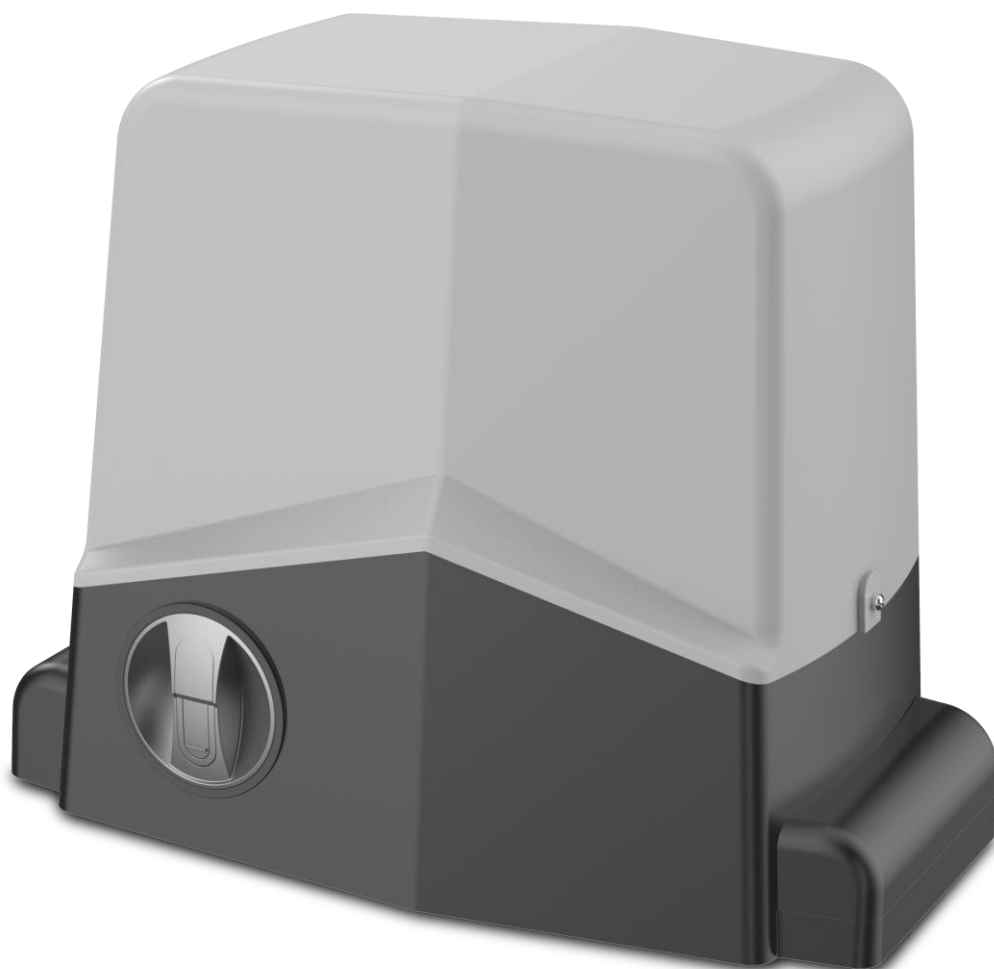


# SLIDING GATE OPENER INSTALLATION MANUAL

# **SAFE**



Provide users with professional gate solutions.



# WARNINGS

Important safety instructions. Carefully read and comply with the Warnings and Instructions that come with the product as improper use can cause injury to people and animals and damage to property. Keep the instructions for future reference and hand them on to any new users. This product is meant to be used only for the purpose for which it was explicitly installed. Any other use constitutes improper use and, consequently, is hazardous. The manufacturer cannot be held liable for any damage as a result of improper, incorrect or unreasonable use.

- This product must be installed correctly by qualified, expert personnel (professional installer).
- Keep adults, children and property out of range of the automated system, especially while it is moving.
- The unit can be used by children over 8 years old and by people with reduced physical, sensory or mental capabilities or with no experience or necessary knowledge on condition they are supervised or trained about the safe use of the equipment and understand the risks involved. Children must not play with the unit.
- Keep remote controls or other control devices out of reach of children in order to avoid the automated system being operated inadvertently.
- The breakage or wear of any mechanical parts of the door (operated part), such as cables, springs, supports..., may generate a hazard. Have the system checked by qualified, expert personnel (professional installer) at regular intervals according to the instructions issued by the installer or manufacturer of the door.
- The manual release's activation could result in uncontrolled door movements if

there are mechanical faults or loss of balance.

- When cleaning the outside, always cut off mains power.
- Do not use the automated system if it is in need of repair. In the event the automated system breaks down or malfunctions, cut off mains power to the system; do not attempt to repair or perform any other work to rectify the fault yourself and instead call in qualified, expert personnel ( professional installer) to perform the necessary repairs or maintenance.
- If any part of the automated system requires direct work of any kind that is not contemplated herein, employ the services of qualified, expert personnel ( professional installer).
- At least once a year, have the automated system, and especially all safety devices, checked by qualified, expert personnel ( professional installer) to make sure that it is undamaged and working properly.

Anything that is not explicitly provided for in the manual is not allowed. The opener's proper operation can only be guaranteed if the manual given herein are complied with. The Firm shall not be answerable for damage caused by failure to comply with the manual featured herein.

While we will not alter the product's essential features, the Firm reserves the right, at any time, to make those changes deemed opportune to improve the product from a technical, design or commercial point of view, and will not be required to update this publication accordingly.

## **II . Main specifications and technical parameters**

ITEM NO.	GATO300	GATO600	GATO800	GATO1000	GATO1500	GATO38	GATO2000 <sub>3</sub>
----------	---------	---------	---------	----------	----------	--------	-----------------------

Power supply	AC230 /120V	AC230 /120V	AC230 /120V	AC230 /120V	AC230 /120V	AC 380V	AC230 /120V
Motor speed	1400 RPM	1400 RPM	1400 RPM	1400 RPM	1400 RPM	1400 RPM	1400 RPM
Output Torque	7Nm	20Nm	22Nm	27Nm	35Nm	35Nm	45Nm
Gate speed	12 m/min	12 m/min	12 m/min	12 m/min	12 m/min	12 m/min	12 m/min
Max gate weight	300 KG	600 KG	700 KG	1 TON	1.5 TON	1.5 TON	2 TON
Working temperature	-45°C- +65°C	-45°C- +65°C	-45°C- +65°C	-45°C- +65°C	-45°C- +65°C	-45°C- +65°C	-45°C- +65°C
Noise	≤56dB	≤56dB	≤56dB	≤ 56dB	≤56dB	≤ 56dB	≤ 56dB
Protection class:	IP44	IP44	IP44	IP44	IP44	IP44	IP44
Certificate	CE	CE	CE	CE	CE	CE	CE

### III. Install steel basement

The gate operator should be fitted on to the threaded bolts in the basement. The weight of the gate should not be borne by the cog wheel. (See the Fig.1)

**ATTENTION:** the aluminum base of gate operator can NOT be in the concrete!!!

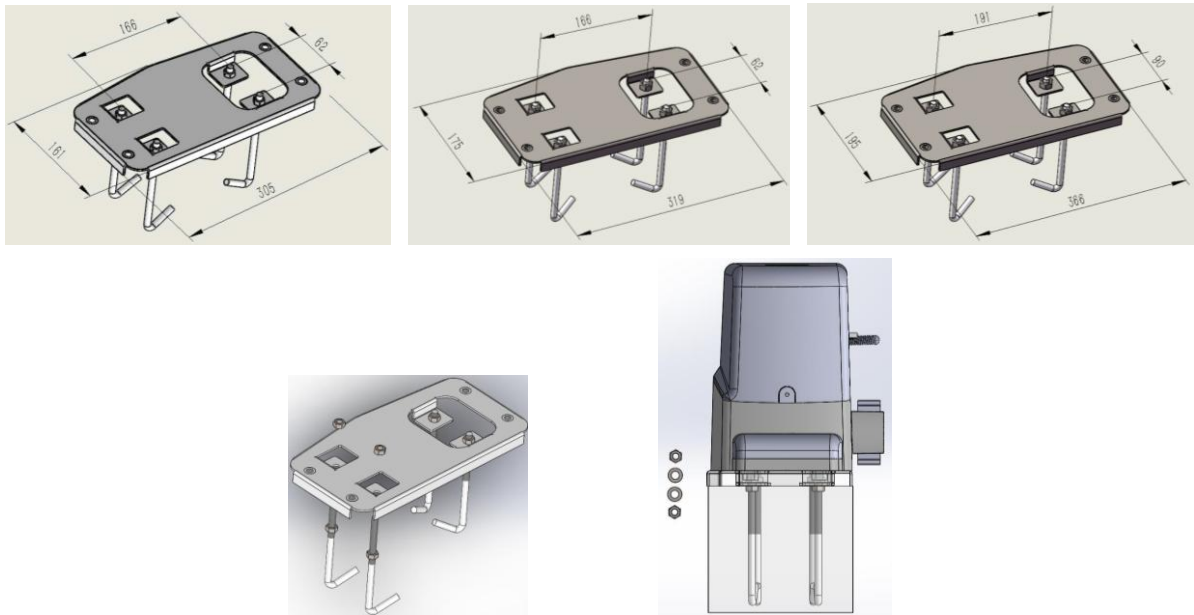


Fig.1

#### IV. Mounting gear rack

The easiest way to fit the gear rack is to first place it on the gate operator's cog, disengage the gate operator and, by pushing the gate further with the gear rack, screwing the rack bit by bit firmly in position. In this way, you ensure that the gear rack engages with the cog wheel in an optimum manner. While doing this, do not forget to mark each fixing point. (Fig.2) There is a gap no less than 0.2mm between the cog wheel and the gear rack bar.

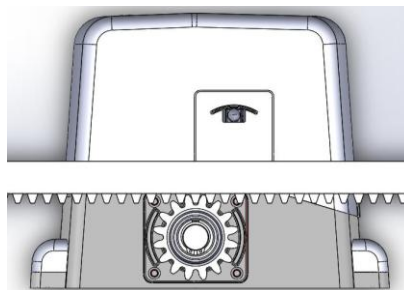


Fig. 2

#### V. Gate operator release mechanism (manual operation)

The gate operator is equipped with a lockable release mechanism to enable the gate to be operated manually in a power cut. The release mechanism is shown in Fig.3

with the clutch disengaging the link between the cog wheel and the gear. Turn the knob clockwise to the end to release the gate, open and close the gate manually; turn the knob anti-clockwise to the end, open and close the gate by transmitters.

ATTENTION: if the limited switch was broken and the gate was blocked at the end, try to release gate operator by the knob, if it is not successful , please unlock the four screws which fix the gate operator to the steel basement.

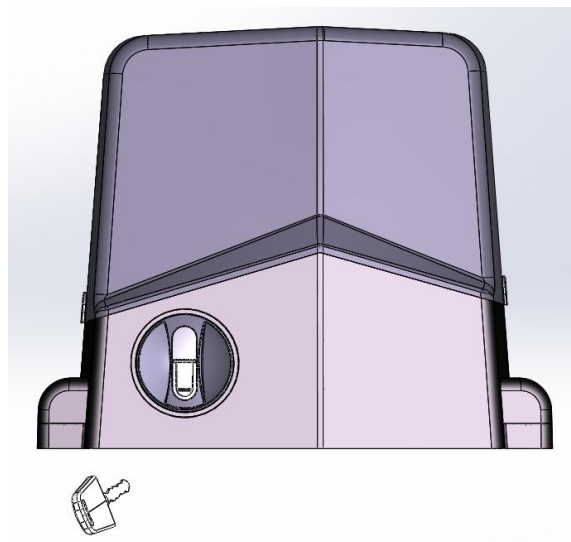
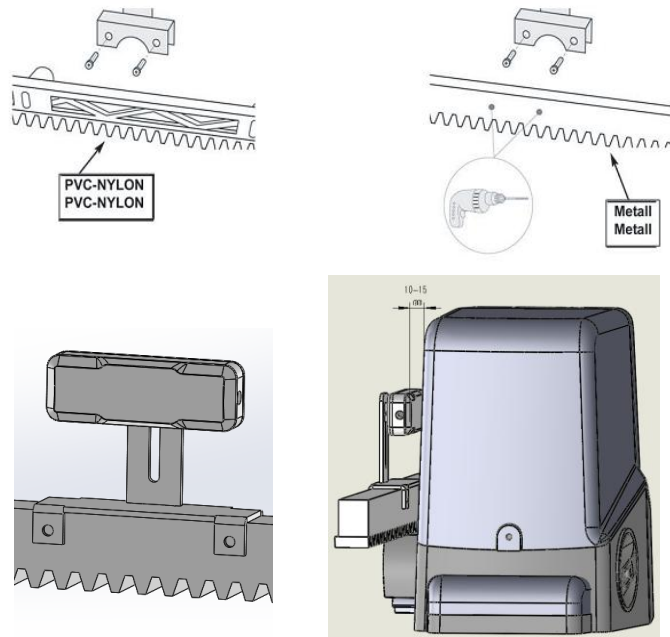


Fig.3

#### **VI.Fitting limited switches (to gate)**

Fit the localizers of spring limited switch/ magnets and their brackets on to the gear rack in those places where the final travel positions are roughly expected to be. (Fig.4) The spring of the gate operator with spring limited switch should just contact the incline of the localizers. The magnet should point towards the motor, and also the contact is located in the middle of the motor.



( MAGNETIC LIMIT SWITCH )



( SPRING LIMIT SWITCH )

Fig.4

## VII.Cables connection:

### Motor cables:

Blue: common          black and brown: OP/CL

### Mechanical limited switch cables:

Blue: common          black and white: OP/CL

### Magnetic limited switch cables:

Red: +12V                  black: GND                  green and white: OP/CL

## VIII. Circuit board setting refer to its manual.