

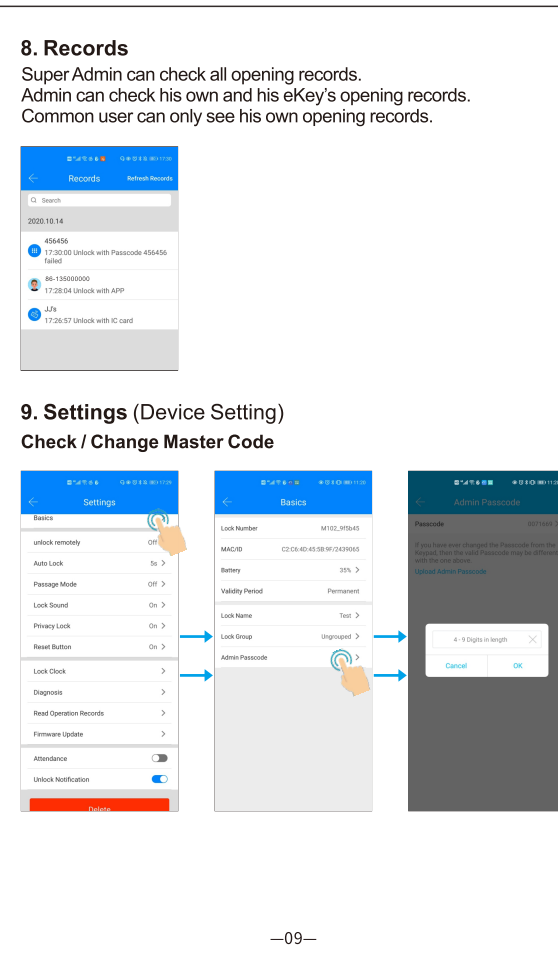
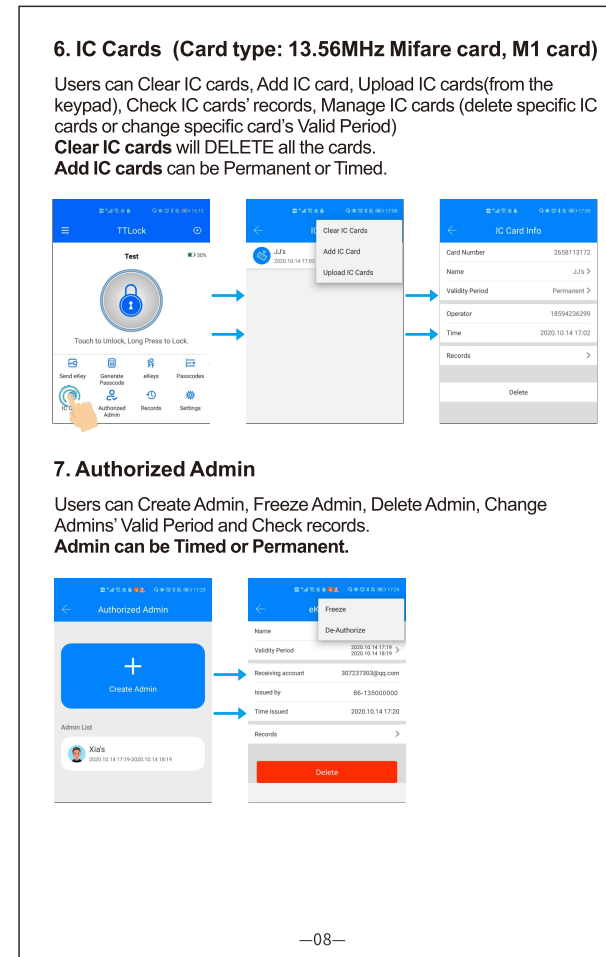
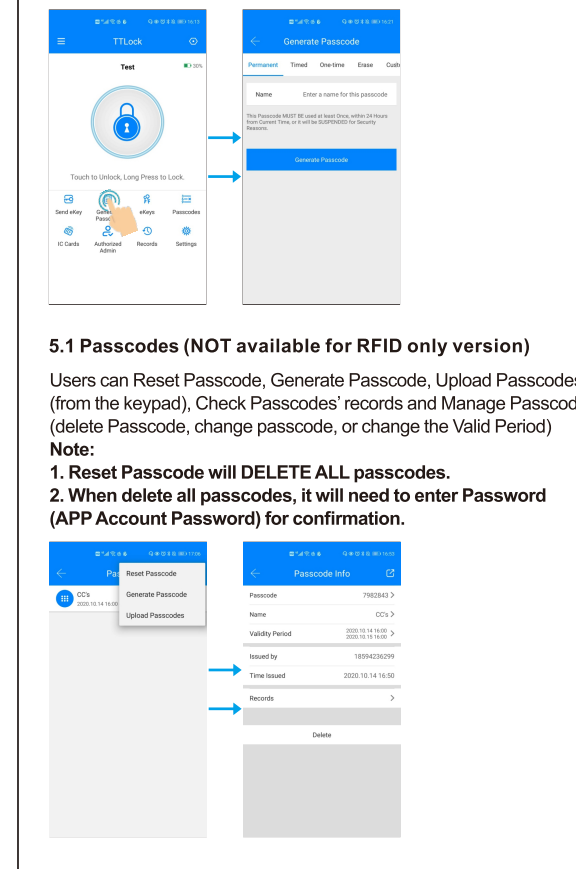
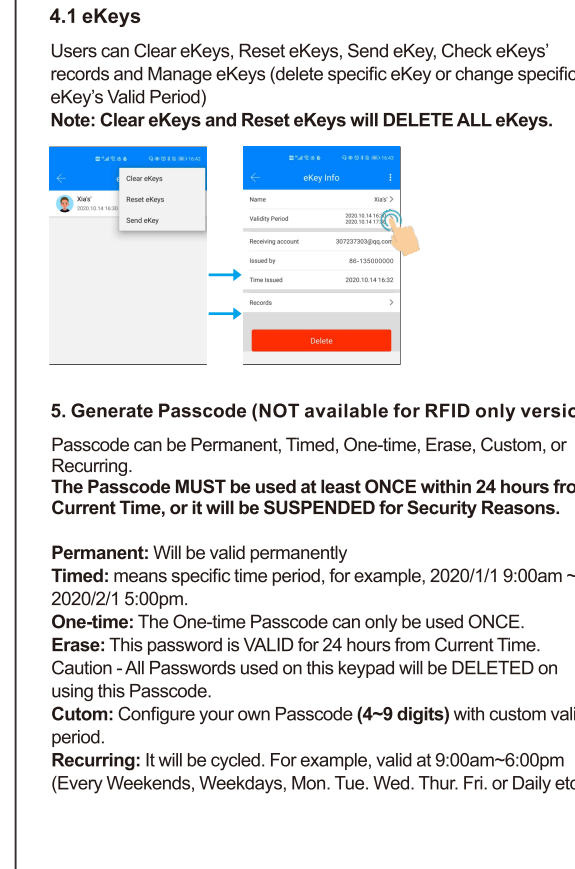
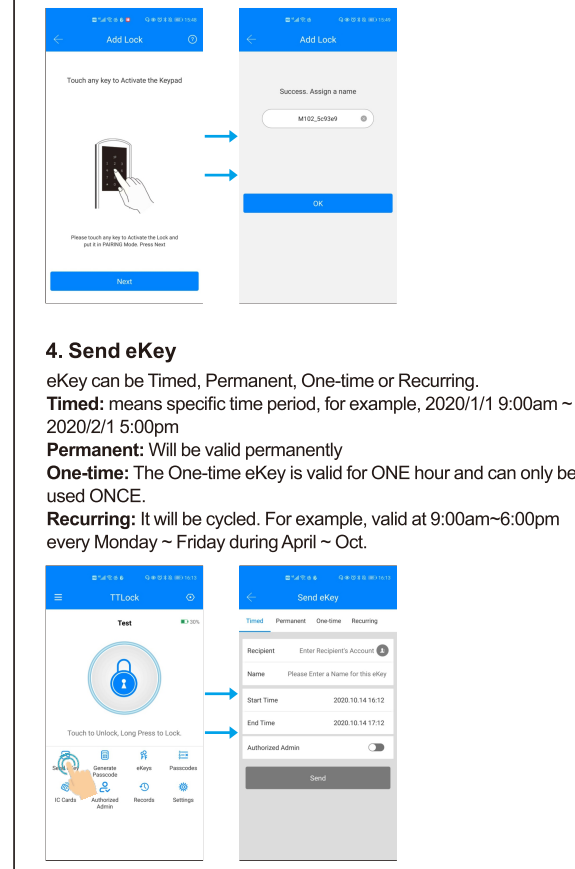
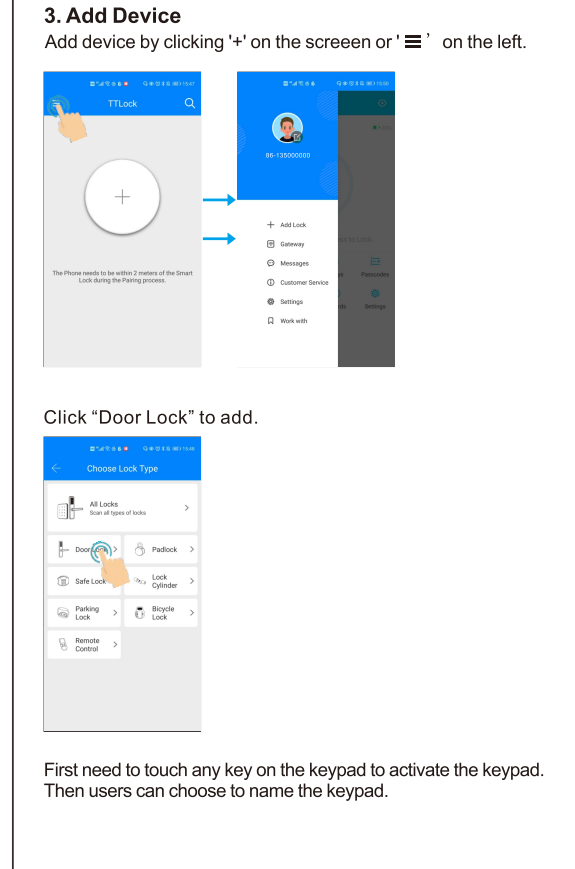
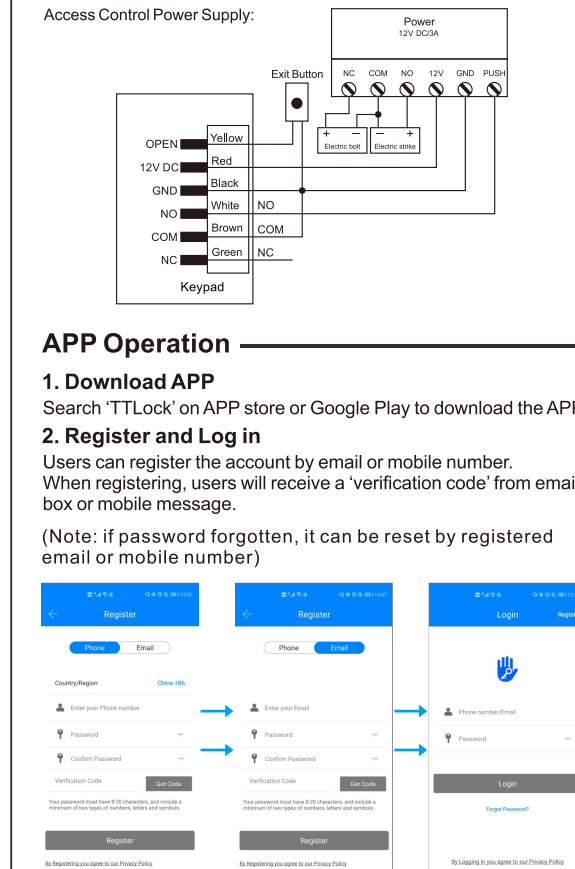
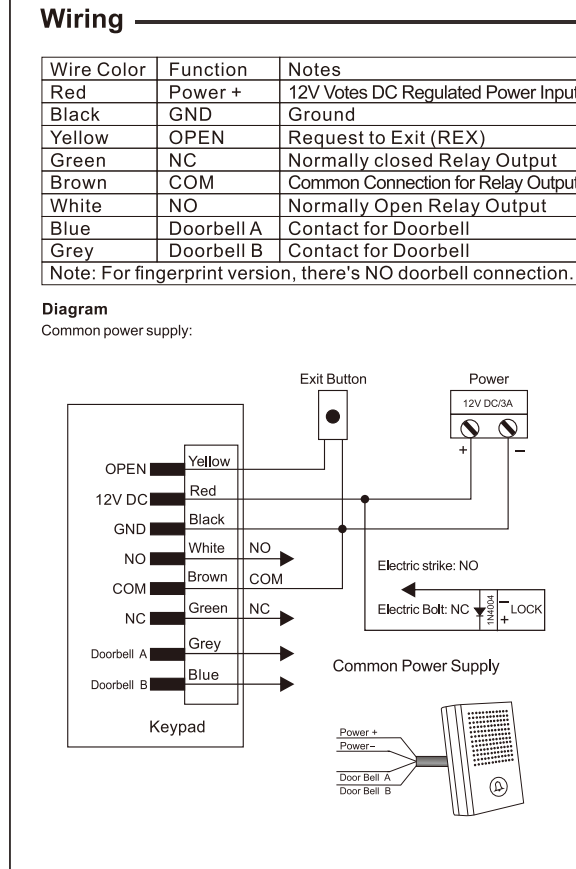
Introduction

The Keypad uses Nordic 51802 Bluetooth chip as the main control and supports low power Bluetooth (BLE 4.1). It supports managing the users (PIN, E-key, Mifare Card) through the APP, also can use APP to unlock. The keypad supports firmware updates, and software functions can be extended through firmware updates.

APP E-key, PIN, Mifare card users can be specified the expiry date (start time - end time), only within the expiry date can unlock. APP supports multiple languages.

Specifications

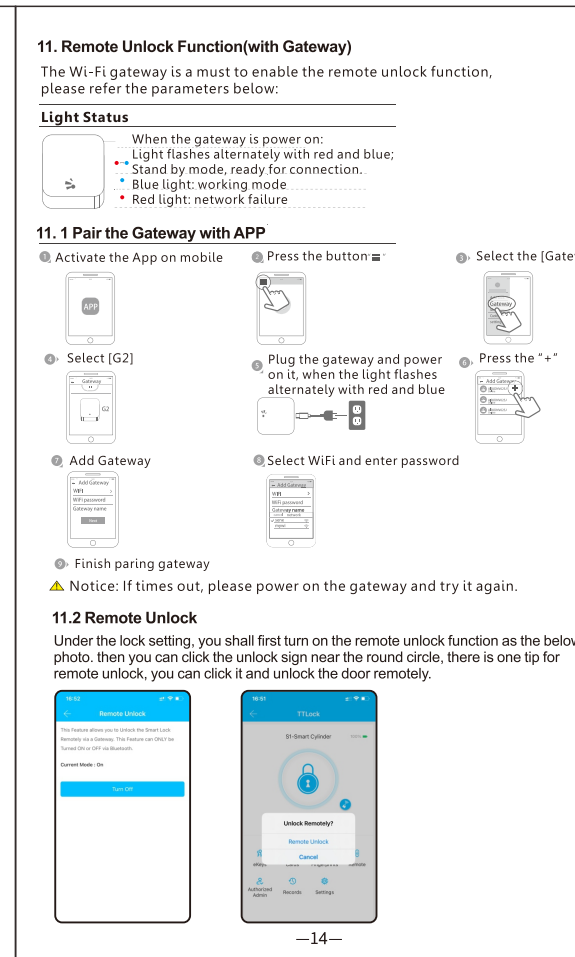
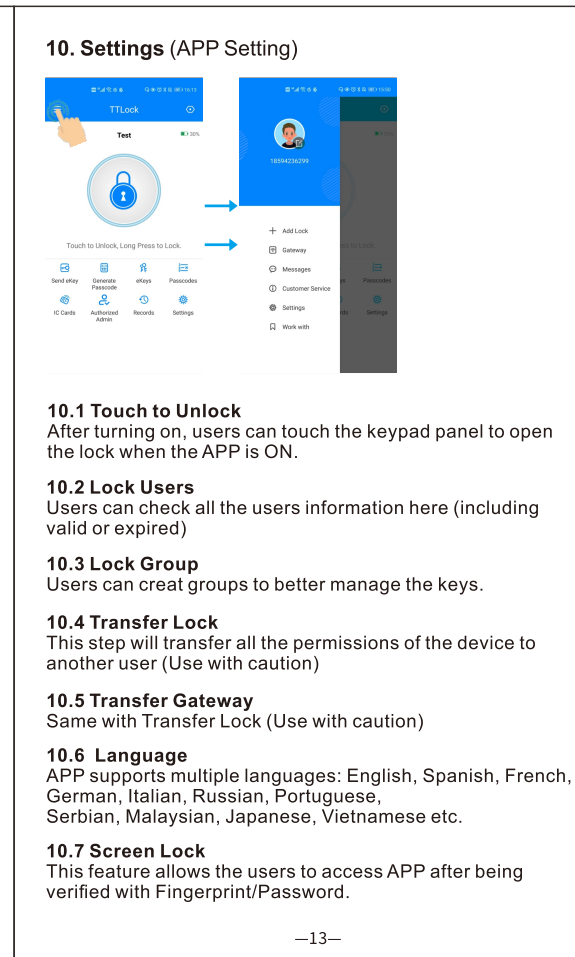
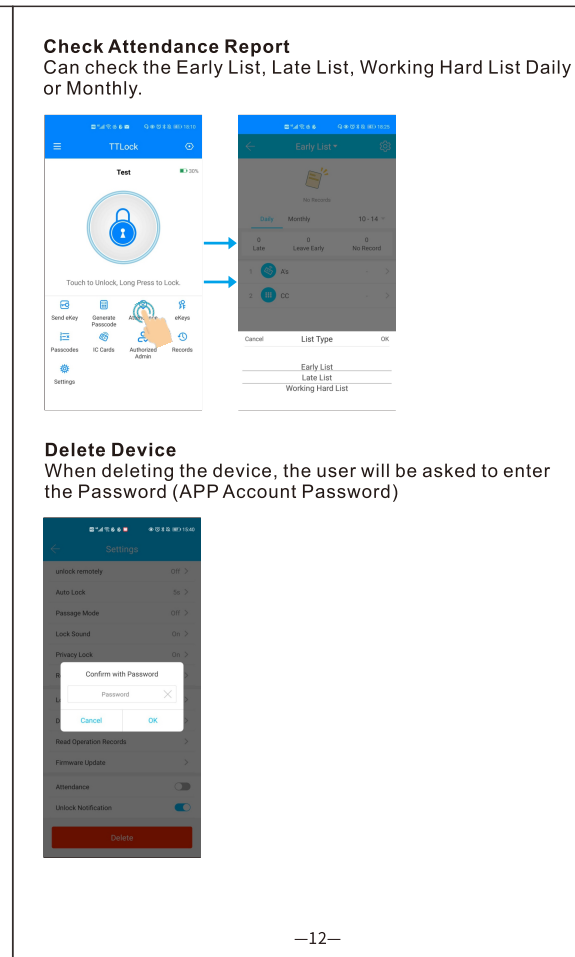
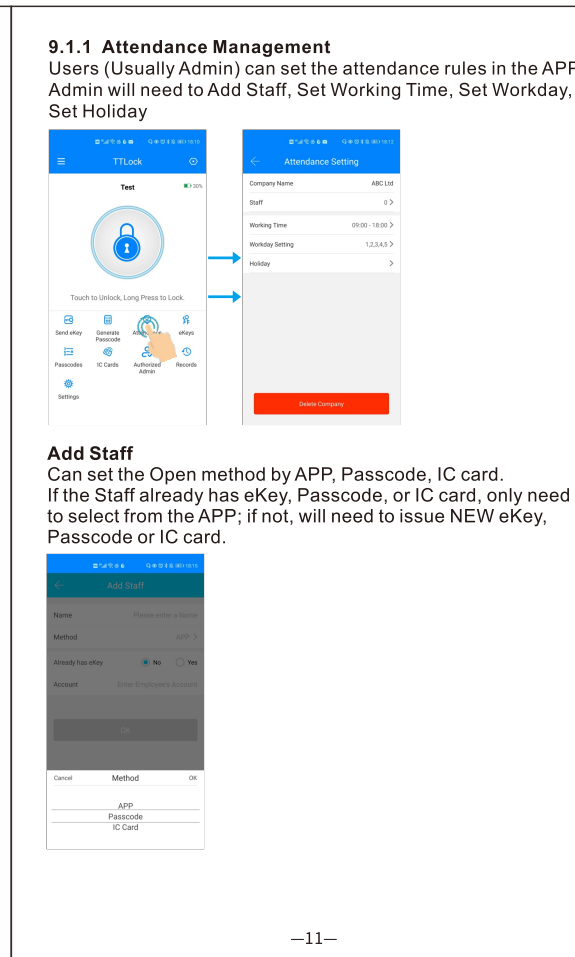
Bluetooth	BLE Bluetooth (BLE 4.1)
Mobile Phone	Android 4.3/IOS7.0 above
PIN User Capacity	Custom password : 150 dynamic password: 150
Card User Capacity	1000
Card Type	13.56MHz Mifare card, M1 card
Fingerprint User Capacity	100 (For Fingerprint version only)
Multi-language	English, Spanish, French, German, Italian, Russian, Portuguese, Serbian, Malaysian, Japanese, Vietnamese etc.
Card Reading Distance	2~4 cm
Keypad	Capacitive TouchKey
Operating Voltage	12V DC
Working Current	≤80mA
Lock Output Load	≤2A
Operating Temperature	-20°C~+60°C
Operating Humidity	0%RH~98%RH
For Outdoor	Waterproof IP66
Physical Colour	Zinc-Alloy Silver & Black
Dimensions	L145 x W68 x D25(mm) (Wide) L148 x W43.5 x D22(mm) (Slim)
Unit Weight	500g (Wide) 330g (Slim)
Shipping Weight	405g (Wide) 405g (Slim)



Basics	Basic info about the device
Unlock Remotely	Available only when using a Gateway (optional)
Auto Lock	Auto lock time can be set from 5s~60s or custom, default: 5s
Passage Mode	Normally Open Mode
Lock Sound	ON / OFF
Privacy Lock	Not available
Reset Button	Not available
Lock Clock	Time Calibrating
Diagnosis	Not available
Read Operation Records	All records stored
Firmware Update	Firmware update

9.1 Attendance

Before turning on, it will ask the user to create a company first.



Keypad Operation

Function	Operation on Keypad
1. Change Master Code	- If there is no mobile phone add the keypad device (that's to say, no Super Admin): * 12 # 123456 # (New Master Code) # (New Master Code again) # (Master Code Length: 4-9 digits)
2. Add Passcode	* 80 # (Master Code) # (Passcode) # (Passcode again) # (Passcode length: 4-9 digits)
3. Delete Passcode	* 71 # (Master Code) # This step will delete all passcodes except the Master Code. Note: After deleting on the device, the user information will be updated only after opening the door once.
4. Change Passcode	* 10 # (Old Passcode) # (New Passcode) # (New Passcode again) # (Passcode length: 4-9 digits)
5. Add IC Card	* 80 # (Master Code) # (Read IC Card)
6. Delete IC Card	* 69 # (Master Code) # This step will delete all IC Cards. Note: After deleting on the device, the user information will be updated only after opening the door once.
7. Unlock	Read (valid Card) to unlock Read (valid passcode #) to unlock
8. Temporary Normally Open	When the door is opened (not close yet), press 12#, the keypad will stay in Temporary Normally Open status until an valid user read on the keypad, then the keypad returns to normal status.
9. Passcode Security	For high security the keypad allows you to hid your correct Passcode with other numbers up to a max of 16 digits.
10. * Key	Functions of * key: - Can delete number when input passcode - Can exit from the programming mode - Press * 3 times, can turn off the keypad backlight